

A P P E N D I X G

=====
(cont'd.)

Diving Simulator of the Kantonhospital, Zürich

The Swiss, despite their geographical position in the centre of Europe, have led some exciting advances in the diving and oceanographic fields. Auguste Piccard, in 1960, with his enclosed one-atmosphere bathysphere, descended into the darkness of the Marianas Trench in the Pacific, the deepest known seabed. In the late fifties and early sixties Hannes Keller, helped by Professor Bühlmann, extended the frontiers of diving in open water with some daring deep dives. Piccard again pressed forward in oceanographic research with the

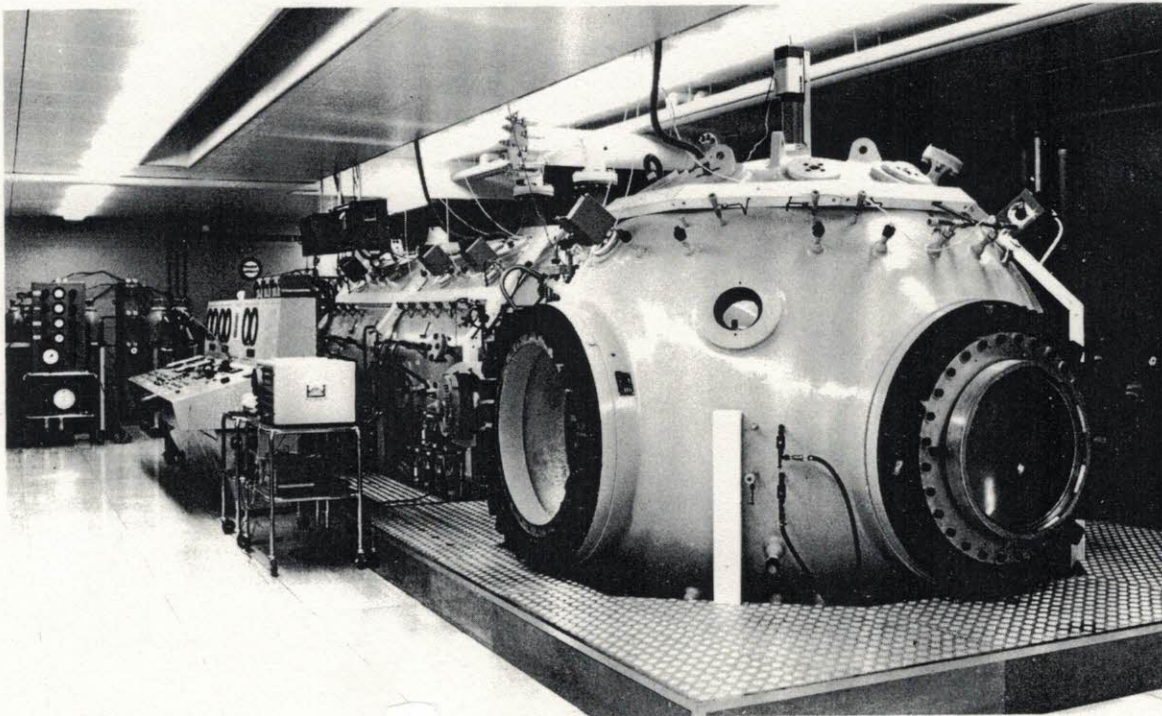


Fig. 1.26. The diving simulator at the research centre of the Kantonhospital, Zürich.